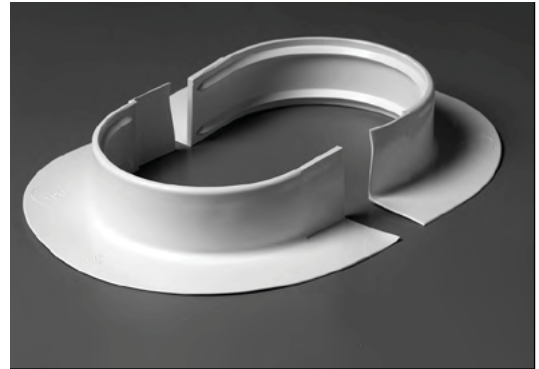


Features and Components

Use: Used to seal uneven penetrations through the membrane that are difficult to flash. The penetration pan is comprised of two pieces that allow for positioning around objects to be flashed. A welding tab is included to seal the penetration pan once positioned.

Material: Two-piece molded TPO (thermoplastic polyolefin) pocket with a rigid vertical wall and preformed flange.

Colour: White



System Compatibility This product may be used as a component in the following systems. Please reference product application for specific installation methods and information.

Multi-Ply	BUR		APP		SBS			
	HA	CA	CA	HW	HA	CA	HW	SA
	<i>Do not use in Multi-Ply systems</i>							

Single Ply	TPO		PVC		EPDM		
	MF	FA	MF	FA	MF	FA	BA
	<i>Used to seal non-standard penetrations in all Single Ply systems</i>						

Key: HA=Hot Applied CA=Cold Applied HW=Heat Weldable SA=Self Adhered MF=Mechanically Fastened FA=Fully Adhered BA=Ballasted

Warranty Information

Approved for use in any duroTUF TPO Membrane Warranty.

Installation/Application



Hot Air Weld

- Refer to the duroTUF TPO application instructions and detail drawings.

Packaging and Dimensions

Size	19cm x 15cm Oval
Thickness	3.97mm

Storage

Storage Conditions	Store indoors, out of direct sunlight, and keep clean and dry prior to application.
--------------------	---