



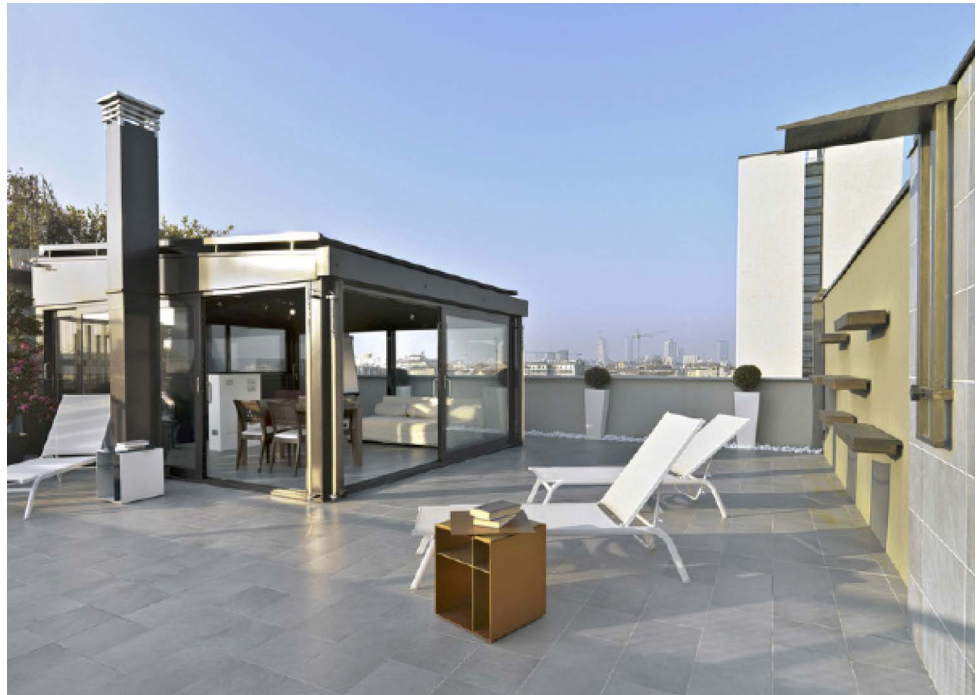
BRANZ Appraised

Appraisal No. 469 [2017]

GRIPSET® 38 AND GRIPSET® 2P EXTERNAL WATERPROOFING MEMBRANES

Appraisal No. 469 [2017]

This Appraisal replaces BRANZ
Appraisal No. 469 [2011].



BRANZ Appraisals

Technical Assessments of products
for building and construction.



Waterproofing Systems

NZ Ltd

4 Malvern Road
Penrose
Auckland

Tel: 09 579 1460

Fax: 09 579 1461

www.waterproofing.co.nz



BRANZ

BRANZ

1222 Moonshine Rd,
RD1, Porirua 5381
Private Bag 50 908
Porirua 5240,
New Zealand

Tel: 04 237 1170

branz.co.nz



Product

- 1.1 Gripset® 38 and Gripset® 2P External Waterproofing Membranes are liquid-applied waterproofing membranes for use under ceramic or stone tile finishes on external decks and balconies.

Scope

- 2.1 Gripset® 38 and Gripset® 2P External Waterproofing Membranes have been appraised for use as waterproofing membranes for buildings within the following scope:
 - the scope limitations of NZBC Acceptable Solution E2/AS1, Paragraph 1.1; and,
 - with timber supporting structures designed and constructed in accordance with the NZBC; and,
 - with a substrate of fibre cement compressed sheet; and,
 - with decks that have a maximum size of 40 m²; and,
 - situated in all Wind Zones of NZS 3604 up to, and including, Extra High.
- 2.2 Gripset® 38 and Gripset® 2P External Waterproofing Membranes have been appraised as waterproofing membranes for buildings within the following scope:
 - the scope limitations of NZBC Acceptable Solution E2/AS1, Paragraph 1.1 with regard to building height and floor plan area; and,
 - with building structures subject to specific engineering design; and,
 - with deck and balcony supporting structures of timber framing with a substrate of fibre cement compressed sheet; or,
 - with a substrate of suspended concrete slab; and,
 - situated in all Wind Zones of NZS 3604, up to and including Extra High.
- 2.3 Gripset® 38 and Gripset® 2P External Waterproofing Membranes have also been appraised for use as waterproofing membranes on specifically designed buildings within the following scope:
 - with building structures subject to specific engineering design; and,
 - with deck and balcony supporting structures of timber framing with a substrate of fibre cement compressed sheet; or,
 - with a substrate of suspended concrete slab; and,
 - subjected to maximum wind pressures [Refer Paragraph 7.8]; and,
 - with the weathertightness design of all junctions being the subject of specific design by the designer. [Note: The design of these junctions has not been appraised by BRANZ and is outside the scope of this Appraisal.]